



*Up-to-date Questions and Answers from authentic resources to improve knowledge and pass the exam at very first attempt. ----- Guaranteed.*



HPE0-J50 Dumps  
HPE0-J50 Braindumps  
HPE0-J50 Real Questions  
HPE0-J50 Practice Test  
HPE0-J50 Actual Questions



*[killexams.com](http://killexams.com)*

**HP**

**HPE0-J50**

*Integrating Protected HPE Storage Solutions*

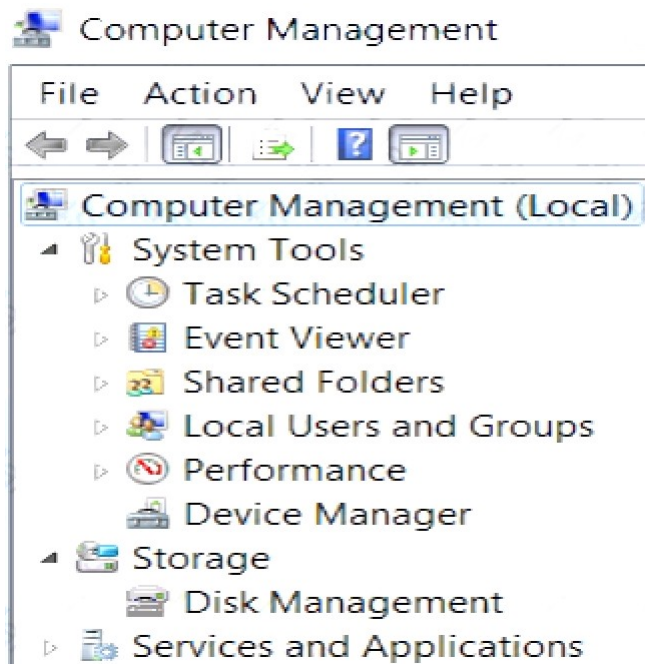
ORDER FULL VERSION

<https://killexams.com/pass4sure/exam-detail/HPE0-J50>



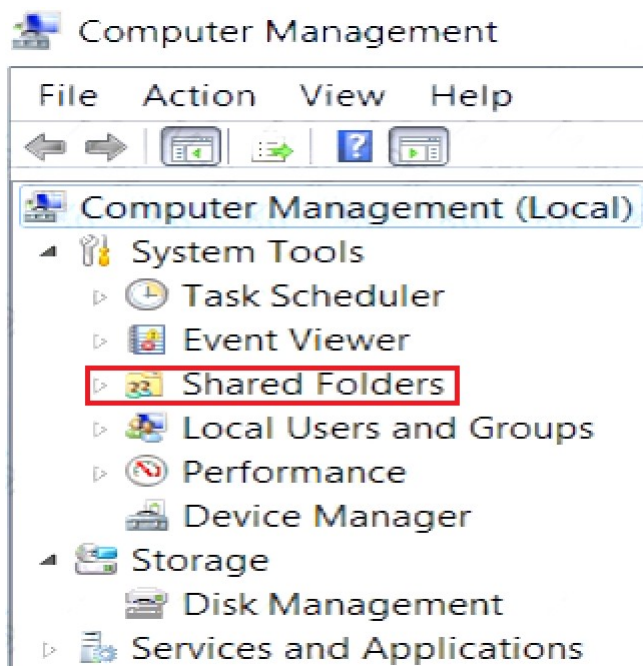
**QUESTION: 62**

A storage integrator is validating a StoreServ implementation. The integrator needs to verify read/write access to an exported volume from a Windows Server. The volume did not show up in Windows Explorer. Click the menu option the storage integrator needs to use to make the volume available in a Windows server.



**Answer:**

Exhibit



**QUESTION: 63**

What does DWPD (drive writes per day) for an SSD indicate?

- A. the maximum number of 4K host writes to the entire drive capacity of the SSD per day over a three-year period
- B. the maximum number of erase operations to the entire drive capacity of the SSD per day over a three-year period
- C. the maximum number of 4K host writes to the entire drive capacity of the SSD per day over a five-year period
- D. the maximum number of drive rewrite cycles (erase and write) for the SSD over a five-year period

**Answer: D**

**QUESTION: 64**

An integrator is validating a design for an HPE 3PAR StoreServ solution. The assessment document shows that there is structured cabling between the rack the array will be installed in and the racks with the SAN switches. The fiber segments between the racks are documented as being 50 micron OM2 and are terminated with SC connectors. What needs to be considered when validating this design?

- A. 3PAR arrays must be directly connected to SAN switches
- B. The SC connectors must be replaced by LC connectors.

- C. OM2 Fiber cables are not supported for 8 Gbps.
- D. Fiber segments cannot mix OM2 and OM4 cables.

**Answer:** A

**QUESTION:** 65

When installing an HPE StoreOnce multinode system, which licenses must be available on all couplets to do Catalyst stores and to be allowed to do Catalyst replication?

- A. Catalyst required for the first couplet
- B. Catalyst and Replication licenses on the first couplet
- C. Catalyst license on all couplets
- D. Replication license on all couplets

**Answer:** B

**QUESTION:** 66

A storage integrator wants to change the tiering affinity of an existing volume on an HPE MSA 1040/2040 with GL220 and higher. How can this goal be achieved?

- A. Change volume tier preference of the volume.
- B. Migrate volume using new tiering settings
- C. Perform a clone operation with a new automatic tiering rule.
- D. Delete the volume, and create a new volume with the correct automatic tiering rule

**Answer:** B

**QUESTION:** 67

A customer finds that the performance of their application is not optimal. The customer's application stores data on an HPE 3PAR StoreServ Array to a volume within an FC tier. How should the storage integrator move the application data to a volume within an SSD tier?

- A. Backup the data, delete the FC volume, create a new SSD volume, and restore the data to it.
- B. Use the Dynamic Optimization feature in the HPE 3PAR StoreServ Management Console.
- C. Use the System Reporter feature in the HPE 3PAR StoreServ Management Console.

D. Create an SSD volume, use the server OS to copy the data to the new volume, and delete the FC volume

**Answer:** C

**QUESTION:** 68

A customer has 10 different branch offices- Each branch has one MSA 1040 and a StoreOnce 3100. The customer has concerns regarding the actual and predictive failures on sites which don't have any IT staff. Which HPE tool should the integrator implement to provide visibility and alerts for the end customer and HPE?

- A. HPE STATS
- B. HPE OneView
- C. HPE insight Support Online
- D. HPE insight Remote Support

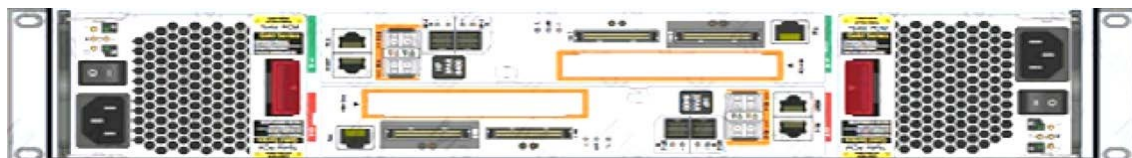
**Answer:** C

**QUESTION:** 69

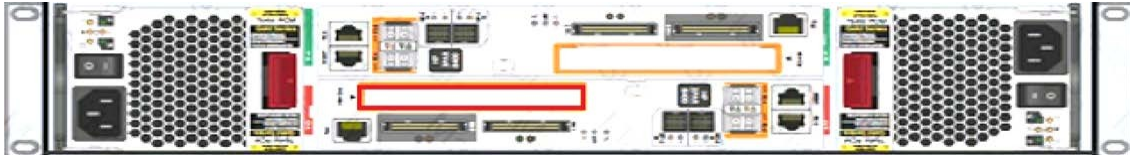
You are installing an additional HPE 3PAR StoreServ SFF disk enclosure in an HPE 3PAR 8200 StoreServ array. The newly-installed enclosure appears as cage1. You are able to verify from the 3PAR CLI that both cage0 and cage1 appear. However, you notice an error in the system health:

Component	Summary Description	Qty
Cabling	Cages with improperly balanced daisy-chain cabling	1
1 total		1

Click on the controller enclosure ports you would look at to start troubleshooting this issue.



**Answer:**  
Exhibit



**QUESTION: 70**

A storage integrator is validating an HPE 3PAR StoreServ implementation. The integrator needs to verify the read/write access to an exported volume from a Windows host. The volume is not visible in Windows Explorer. Place the steps in the correct order to rectify the solution.

Steps	Order
select Disk Management	
select Initialize	
select Online	
select Rescan Disks	
select Format Drive	

>

<

>

<

**Answer:**

Exhibit

Steps	Order
select Disk Management	select Rescan Disks
select Initialize	select Disk Management
select Online	select Initialize
select Rescan Disks	select Online
select Format Drive	select Format Drive

>

<

>

<



# SAMPLE QUESTIONS



*These questions are for demo purpose only. **Full version** is up to date and contains actual questions and answers.*

*Killexams.com is an online platform that offers a wide range of services related to certification exam preparation. The platform provides actual questions, exam dumps, and practice tests to help individuals prepare for various certification exams with confidence. Here are some key features and services offered by Killexams.com:*



**Actual Exam Questions:** *Killexams.com provides actual exam questions that are experienced in test centers. These questions are updated regularly to ensure they are up-to-date and relevant to the latest exam syllabus. By studying these actual questions, candidates can familiarize themselves with the content and format of the real exam.*

**Exam Dumps:** *Killexams.com offers exam dumps in PDF format. These dumps contain a comprehensive collection of questions and answers that cover the exam topics. By using these dumps, candidates can enhance their knowledge and improve their chances of success in the certification exam.*

**Practice Tests:** *Killexams.com provides practice tests through their desktop VCE exam simulator and online test engine. These practice tests simulate the real exam environment and help candidates assess their readiness for the actual exam. The practice tests cover a wide range of questions and enable candidates to identify their strengths and weaknesses.*

**Guaranteed Success:** *Killexams.com offers a success guarantee with their exam dumps. They claim that by using their materials, candidates will pass their exams on the first attempt or they will refund the purchase price. This guarantee provides assurance and confidence to individuals preparing for certification exams.*

**Updated Content:** *Killexams.com regularly updates its question bank and exam dumps to ensure that they are current and reflect the latest changes in the exam syllabus. This helps candidates stay up-to-date with the exam content and increases their chances of success.*

**Technical Support:** *Killexams.com provides free 24x7 technical support to assist candidates with any queries or issues they may encounter while using their services. Their certified experts are available to provide guidance and help candidates throughout their exam preparation journey.*

For More exams visit <https://killexams.com/vendors-exam-list>  
*Kill your exam at First Attempt....Guaranteed!*